

杆端关节球 (英制)
V.inner rings for rod ends bearings(inch size)

SIZE	E	d(+0.0035/-0.01)	W(0/-0.1)	R×45°	Weight(KG)
CBL3DP	11.113	4.826	7.938	0.3	0.003855
CBL4DP	12.7	6.35	9.525	0.3	0.005298
CBL5DP	15.875	7.938	11.113	0.4	0.010072
CBL6DP	18.256	9.525	12.7	0.4	0.014700
CBL7DP	20.638	11.113	14.275	0.5	0.020523
CBL8DP	23.813	12.7	15.875	0.5	0.031316
CBL10DP	28.575	15.875	19.05	0.5	0.051803
CBL12DP	33.338	19.05	22.225	0.5	0.079556
CBL16DP	47.625	25.4	34.925	0.5	0.260452

向心关节球 (英制)
V.inner rings for spherical plain bearings(inch size)

SIZE	E	d(+0.0035/-0.01)	W(0/-0.1)	R×45°	Weight(KG)
CNBL2DP	8.712	4.191	6.35	0.3	0.001748
CNBL3DP	10.312	4.826	7.14	0.3	0.002891
CNBL4DP	12.7	6.35	8.71	0.3	0.005109
CNBL5DP	14.275	7.938	9.53	0.4	0.006456
CNBL6DP	16.662	9.525	10.31	0.4	0.009574
CNBL7DP	17.45	11.113	11.1	0.4	0.009523
CNBL8DP	19.837	12.7	12.7	0.4	0.013895
CNBL9DP	22.225	14.27	14.27	0.5	0.019416
CNBL10DP	24.587	15.88	15.88	0.5	0.026135
CNBL12DP	30.15	19.05	19.05	0.5	0.049654
CNBL14DP	33.338	22.23	22.23	0.5	0.061704
CNBL16DP	38.1	25.4	25.4	0.5	0.092094

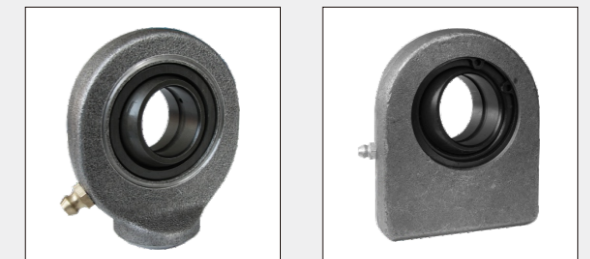
球面镀铬, 粗糙度Ra<0.2
spherical surface treatment:hard chrome plated.roughness Ra<0.2

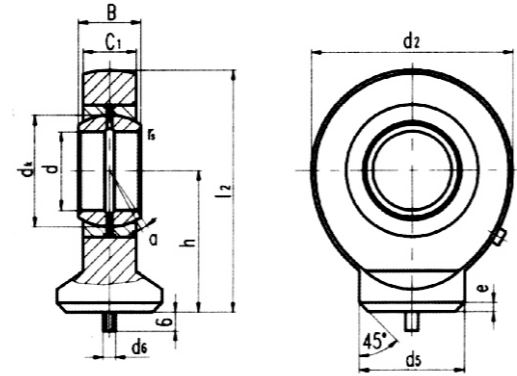
油缸耳环关节轴承

Oil cylinder earrings spherical plain bearings

杆端关节轴承

Rod ends

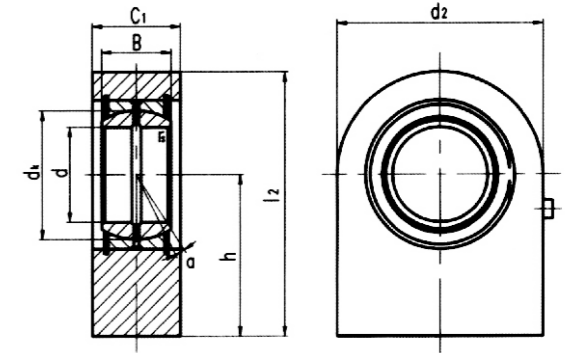




滑动摩擦副: 钢/钢
Sliding contact surfaces: steel/steel

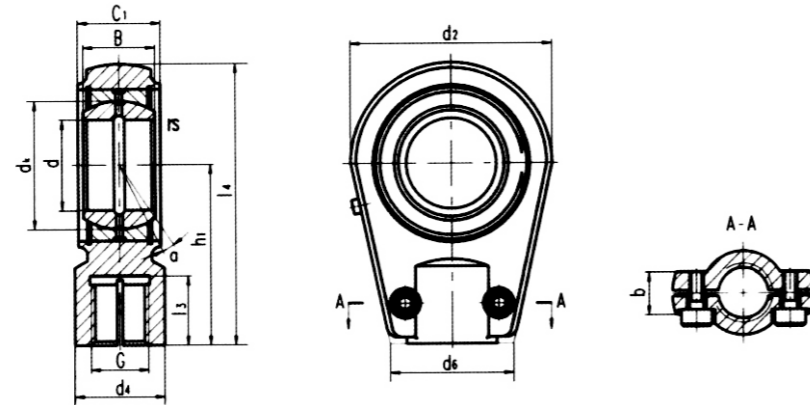
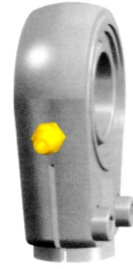
轴承型号 Bearing number	外形尺寸 Dimensions mm												额定载荷kN Load ratings		重量 Weight ≈kg
	d	B	dk	C1 max	d2 max	h	l2 max	d5 max	d6	e	rs min	α° ≈	动载荷 Dynamic	静载荷 Static	
GK10DO ¹⁾	10	9	16	7	29	24	38.5	15	3	1.5	0.3	12	8.1	15	0.041
GK12DO ¹⁾	12	10	18	8	34	27	44	17.5	3	1.5	0.3	10	10	20	0.066
GK15DO ²⁾	15	12	22	10	40	31	51	21	4	2	0.3	8	16	24	0.12
GK17DO ²⁾	17	14	25	11	46	35	58	24	4	2	0.3	10	21	31	0.19
GK20DO	20	16	29	13	53	38	64.5	27.5	4	2	0.3	9	30	42	0.23
GK25DO	25	20	35.5	17	64	45	77	33.5	4	3	0.6	7	48	66	0.43
GK30DO	30	22	40.7	19	73	51	87.5	40	4	3	0.6	6	62	87	0.64
GK35DO	35	25	47	21	82	61	102	47	4	3	0.6	6	79	99	0.96
GK40DO	40	28	53	23	92	69	115	52	4	4	0.6	7	99	122	1.3
GK45DO	45	32	60	27	102	77	128	58	6	4	0.6	7	127	160	1.8
GK50DO	50	35	66	30	112	88	144	62	6	4	0.6	6	156	193	2.5
GK60DO	60	44	80	38	135	100	167.5	70	6	4	1	6	245	294	3.9
GK70DO	70	49	92	42	160	115	195	80	6	5	1	6	313	406	6.6
GK80DO	80	55	105	47	180	141	231	95	6	5	1	6	400	494	8.7

- 1) 不能润滑。 Can not be relubricated.
2) 只能通过杆端眼孔润滑。 Can only be relubricated through the rod end housing.



滑动摩擦副: 钢/钢
Sliding contact surfaces: steel/steel

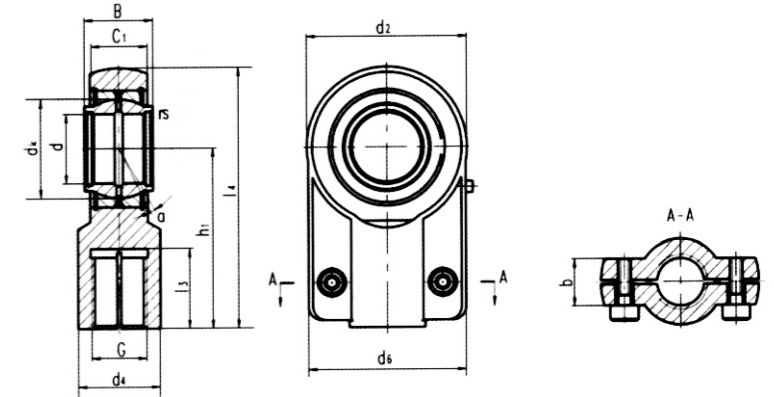
轴承型号 Bearing number	外形尺寸 Dimensions mm										额定载荷kN Load ratings		重量 Weight ≈kg
	d	B	dk	C1 max	d2 max	h	l2 max	rs min	α° ≈	动载荷 Dynamic	静载荷 Static		
GF20DO	20	16	29	19	50	38	63	0.3	9	30	55	0.35	
GF25DO	25	20	35.5	23	55	45	72.5	0.6	7	48	58	0.53	
GF30DO	30	22	40.7	28	65	51	83.5	0.6	6	62	98	0.87	
GF35DO	35	25	47	30	83	61	102.5	0.6	6	79	164	1.5	
GF40DO	40	28	53	35	100	69	119	0.6	7	99	260	2.4	
GF45DO	45	32	60	40	110	77	132	0.6	7	127	329	3.4	
GF50DO	50	35	66	40	123	88	149.5	0.6	6	156	376	4.4	
GF60DO	60	44	80	50	140	100	170	1	6	245	490	7.1	
GF70DO	70	49	92	55	164	115	197	1	6	313	636	10	
GF80DO	80	55	105	60	180	141	231	1	6	400	705	15	



滑动摩擦副: 钢/钢
Sliding contact surfaces: steel/steel

轴承型号 Bearing number	外形尺寸 Dimensions mm													额定载荷kN Load ratings		重量 Weight ≈kg	
	d	B	d _k	C ₁ max	d ₂ max	G 6H	h ₁	l ₃ max	l ₄ max	d ₄ max	d ₆ max	b	r _s	α° ≈	动载荷 Dynamic		静载荷 Static
GIHR-K20DO	20	16	29	19	56	M16×1.5	50	17	80	25	46	17	0.3	9	30	42	0.43
GIHR-K25DO	25	20	35.5	23	56	M16×1.5	50	17	80	25	46	21	0.6	7	48	52	0.48
GIHR-K30DO	30	22	40.7	28	64	M22×1.5	60	23	94	32	50	26	0.6	6	62	72	0.74
GIHR-K35DO	35	25	47	30	78	M28×1.5	70	29	112	40	66	28	0.6	6	79	104	1.2
GIHR-K40DO	40	28	53	35	94	M35×1.5	85	36	135	49	76	33	0.6	7	99	173	2
GIHR-K50DO	50	35	66	40	116	M45×1.5	105	46	168	61	90	37	0.6	6	156	265	3.8
GIHR-K60DO	60	44	80	50	130	M58×1.5	130	59	200	75	120	46	1	6	245	320	5.4
GIHR-K70DO	70	49	92	55	154	M65×1.5	150	66	237	86	130	51	1	6	313	440	8.5
GIHR-K80DO	80	55	105	60	176	M80×2	170	81	265	105	160	55	1	6	400	570	12.0
GIHR-K90DO	90	60	115	65	206	M100×2	210	101	323	124	180	60	1	5	490	735	21.5
GIHR-K100DO	100	70	130	70	230	M110×2	235	111	360	138	200	65	1	7	607	965	27.5

若是左旋螺纹, 轴承型号需加“L”, 例如GIHL-K30DO
For left-hand thread, suffix "L" is added to bearing number, e.g. GIHL-K30DO



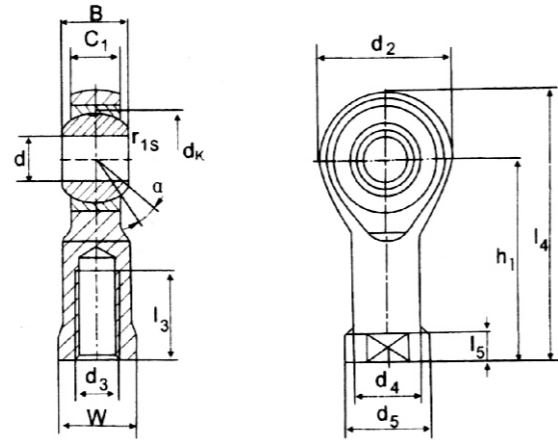
滑动摩擦副: 钢/钢
Sliding contact surfaces: steel/steel

轴承型号 Bearing number	外形尺寸 Dimensions mm													额定载荷kN Load ratings		重量 Weight ≈kg	
	d	B	d _k	C ₁ max	d ₂ max	G 6H	h ₁	l ₃ max	l ₄ max	d ₄ max	d ₆ max	b	r _s	α° ≈	动载荷 Dynamic		静载荷 Static
GIHN-K12LO*	12	12	18	11	32	M12×1.25	38	17	54	16.5	32	11	0.3	4	10	15	0.11
GIHN-K16LO	16	16	23	14	40	M14×1.5	44	19	64	21	40	14	0.3	4	17	24	0.21
GIHN-K20LO	20	20	29	17	47	M16×1.5	52	23	77	25	47	17	0.3	4	30	36	0.40
GIHN-K25LO	25	25	35.5	22	58	M20×1.5	65	29	96	30	54	19	0.6	4	48	57	0.66
GIHN-K32LO	32	32	43	28	71	M27×2	80	37	118.5	38	66	22	0.6	4	65	81	1.2
GIHN-K40LO	40	40	53	33	90	M33×2	97	46	146	47	80	26	0.6	4	99	156	2.1
GIHN-K50LO	50	50	66	41	109	M42×2	120	57	179.5	58	96	32	0.6	4	156	250	4.5
GIHN-K63LO	63	63	83	53	136	M48×2	140	64	213	70	114	38	1	4	235	343	7.6
GIHN-K70LO	70	70	92	57	155	M56×2	160	76	245	80	135	42	1	4	315	540	9.5
GIHN-K80LO	80	80	105	66	168	M64×3	180	86	270	90	148	48	1	4	400	695	14.5

若是左旋螺纹, 轴承型号需加“L”, 例如GIHN-KL12LO, 带“*”的型号均不能润滑
For left-hand thread, suffix "L" is added to bearing number, e.g. GIHN-KL12LO.
Relubrication not possible for the size marked "*".

自润滑内螺纹杆端关节轴承

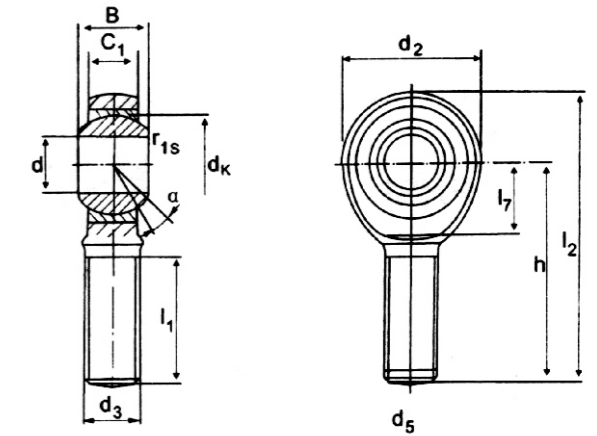
Spherical Bearings Rod end(Maintenance-Free Type)



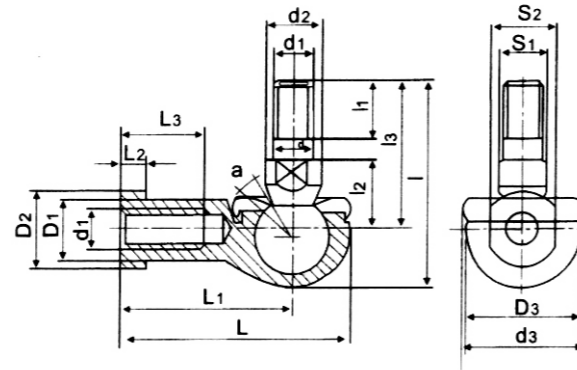
轴承 型号 Bearing number	外形尺寸 Dimensions											额定载荷kN Load ratings		重量 Weight ≈kg			
	d	d ₂	B	C ₁	W	d ₃	d ₄	d ₅	h ₁	L ₃	L ₄	L ₅	d ₁		α° ≈	动载荷 Dynamic	静载荷 Static
SI5T/K	5	18	8	6	9	M5×0.8	9	11	27	10	36	4.5	7.7	13	6	7.5	0.018
SI6T/K	6	20	9	6.75	11	M6×1	10	13	30	12	40	5	8.9	13	7.2	9.3	0.027
SI8T/K	8	24	12	9	13	M8×1.25	12.5	16	36	16	48	5	10.4	14	11.6	16.7	0.046
SI10T/K	10	28	14	10.5	17	M10×1.5	15	19	43	20	57	6.5	12.9	13	14.5	23.4	0.076
SI12T/K	12	32	16	12	19	M12×1.75	17.5	22	50	22	66	6.5	15.4	13	17	32	0.115
SI14T/K	14	36	19	13.5	22	M14×2	20	25	57	25	75	8	16.8	16	24	41.9	0.170
SI16T/K	16	42	21	15	22	M16×2	22	27	64	28	85	8	19.3	15	28.5	52.7	0.230
SI18T/K	18	46	23	16.5	27	M18×1.5	25	31	71	32	94	10	21.8	15	35	63.8	0.320
SI20T/K	20	50	25	18	32	M20×1.5	27.5	34	77	33	102	10	24.3	14	40	78.1	0.415
SI22T/K	22	54	28	20	32	M22×1.5	30	37	84	37	111	10	25.8	15	52	97.2	0.540
SI25T/K	25	60	31	22	36	M24×2	33.5	42	94	42	124	12	29.6	15	60	122.1	0.750
SI30T/K	30	70	37	25	41	M30×2	40	51	110	51	145	15	34.8	15	81	168.4	1.130
SI35T/K	35	80	43	28	50	M36×2	46	56	125	56	165	15	37.7	17	100	205.7	1.600

自润滑外螺纹杆端关节轴承

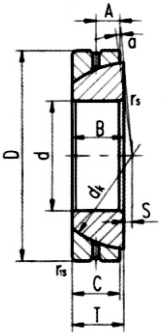
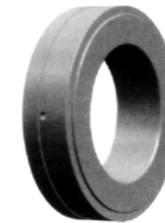
Spherical Bearings Rod end(Maintenance-Free Type)



轴承 型号 Bearing number	外形尺寸 Dimensions											额定载荷kN Load ratings		重量 Weight ≈kg
	d	d ₂	B	C ₁	d ₃	h	L ₁	L ₂	d ₁	α° ≈	动载荷 Dynamic	静载荷 Static		
SA5T/K	5	18	8	6	M5×0.8	33	19	42	7.7	13	4	7.5	0.013	
SA6T/K	6	20	9	6.75	M6×1	36	22	46	8.9	13	4.4	9.3	0.020	
SA8T/K	8	24	12	9	M8×1.25	42	25	54	10.4	14	8	16.7	0.033	
SA10T/K	10	28	14	10.5	M10×1.5	48	29	62	12.9	13	12.9	23.4	0.056	
SA12T/K	12	32	16	12	M12×1.75	54	33	70	15.4	13	17	32	0.087	
SA14T/K	14	36	19	13.5	M14×2	60	38	78	16.8	16	24	41.9	0.129	
SA16T/K	16	42	21	15	M16×2	66	40	87	19.3	15	28.5	52.7	0.189	
SA18T/K	18	46	23	16.5	M18×1.5	72	44	95	21.8	15	35	63.8	0.267	
SA20T/K	20	50	25	18	M20×1.5	78	47	103	24.3	14	40	78.1	0.348	
SA22T/K	22	54	28	20	M22×1.5	84	51	111	25.8	15	52	97.2	0.443	
SA25T/K	25	60	31	22	M24×2	94	58	124	29.6	15	60	122.1	0.600	
SA30T/K	30	70	37	25	M30×2	110	71	145	34.8	15	81	168.4	1.030	
SA35T/K	35	80	43	28	M36×2	125	77	165	37.7	17	100	205.7	1.600	

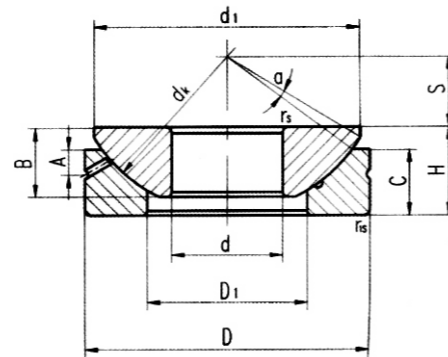
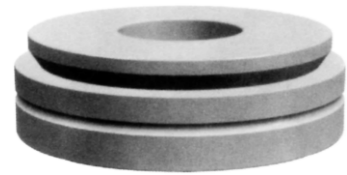


轴承型号 Bearing number	外形尺寸 Dimensions																	额定载荷kN Load ratings 动载荷 Dynamic	重量 Weight ≈kg
	d	d1	l	l1	l2	l3	d2	S1	L	L1	L2	L3	D1	D2	D3	S2	α°		
SQ5C	5	M5×0.8	30	8	10	21	9	7	36	27	4	14	9	12	18	10	25	12	0.027
SQ6C	6	M6×1	36	11	11	26	10	8	41	30	5	14	10	13	20	10	25	13.8	0.027
SQ8C	8	M8×1.25	44	12	14	31	12	10	49	36	5	17	13	16	25	13	25	17.5	0.064
SQ10C	10	M10×1.25	52	15	17	37	14	11	58	43	6.5	21	15	19	29	16	25	25.6	0.106
SQ12C	12	M12×1.25	58	17	19	42	19	16	66	50	6.5	25	18	22	31	18	25	37.3	0.180
SQ14C	14	M14×1.5	74	22	21	56	19	16	75	57	8	26	20	25	35	21	25	51	0.260
SQ16C	16	M16×1.5	80	23	23	60	22	18	84	64	8	32	22	27	39	24	25	59	0.335



滑动摩擦副: 钢/钢
Sliding contact surfaces: steel/steel

轴承型号 Bearing number	外形尺寸 Dimensions										额定载荷kN Load ratings		重量 Weight ≈kg
	d	D	B	C	T	dk	S	A	r _s , r _{1s} min	α°	动载荷 Dynamic	静载荷 Static	
GAC25S	25	47	15	14	15	42	0.6	7.5	1	2.5	50	250	0.148
GAC28S	28	52	16	15	16	47	1	8	1	2	60	300	0.186
GAC30S	30	55	17	15	17	49.5	1.3	8.5	1	4.5	63	315	0.208
GAC32S	32	58	17	16	17	52	2	8.5	1	2	71	354	0.241
GAC35S	35	62	18	T6	18	55.5	2.1	9	1	4	78	390	0.268
GAC40S	40	68	19	17	19	62	2.8	9.5	1	3.5	92	463	0.327
GAC45S	45	75	20	18	20	68.5	3.5	10	1	3	108	540	0.416
GAC50S	50	80	20	19	20	74	4.3	10	1	1.5	123	618	0.455
GAC55S	55	90	23	20	23	82	5	11.5	1.1	4	144	721	0.645
GAC60S	60	95	23	21	23	88.5	5.7	11.5	1.1	2.5	163	817	0.714
GAC65S	65	100	23	22	23	93.5	6.5	11.5	1.1	1	180	905	0.759
GAC70S	70	110	25	23	25	102	7.2	12.5	1.1	2	206	1030	1.04
GAC75S	75	115	25	24	25	107	7.9	12.5	1.1	1	220	1129	1.12
GAC80S	80	125	29	25.5	29	115	8.6	14.5	1.1	3.5	258	1290	1.54
GAC85S	85	130	29	26.5	29	122	9.4	14.5	1.1	2	284	1422	1.61
GAC90S	90	140	32	28	32	128.5	10.1	16	1.5	3.5	316	1580	2.09
GAC95S	95	145	32	29.5	32	135	10.8	16	1.5	2	350	1750	2.22
GAC100S	100	150	32	31	32	141	11.6	16	1.5	0.5	384	1923	2.34
GAC105S	105	160	35	32.5	35	148	12.3	17.5	2	2	423	2116	2.93
GAC110S	110	170	38	34	38	155	13	19	2	3	463	2318	3.68
GAC120S	120	180	38	37	38	168	14.5	19	2	0.5	547	2735	3.97
GAC130S	130	200	45	4.3	45	188	18	19	2.5	1	710	3550	5.92
GAC140S	140	210	45	43	45	198	19	19	2.5	1	740	3740	6.33
GAC150S	150	225	48	46	48	211	20	20.5	3	1	850	4270	8.01
GAC160S	160	240	51	49	51	225	20	22	3	1	970	4850	9.42
GAC170S	170	260	57	55	57	246	21	27	3	1	1190	5950	12.3
GAC180S	180	280	64	61	64	260	21	28	3	1	1395	6970	17.4
GAC190S	190	290	64	62	64	275	26	30	3	0.5	1500	7500	18.2
GAC200S	200	310	70	66	70	290	26	30	3	1.5	1680	8420	22.5

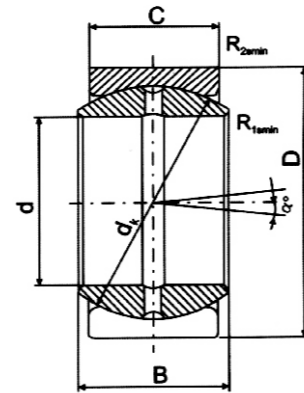


滑动摩擦副: 钢/钢
Sliding contact surfaces: steel/steel

轴承 型号 Bearing number	外形尺寸 Dimensions mm												额定载荷kN Load ratings		重量 Weight ≈kg
	d	D	B	C	H	dk	S	d1 max	D1 min	A	rs, r1s min	α° ≈	动载荷 Dynamic	静载荷 Static	
GX10S	10	30	7.5	7	9.5	32	7	27.5	15.5	3	0.6	5	27	136	0.036
GX12S	12	35	9.5	9.3	13	38	8	32	18	4	0.6	5	37	188	0.072
GX15S	15	42	11	10.8	15	46	10	39	22.5	5	0.6	6	53	267	0.108
GX17S	17	47	11.8	11.2	16	52	11	43.5	27	5	0.6	4	61	311	0.137
GX20S	20	55	14.5	13.8	20	60	12.5	50	31	6	1	5	84	425	0.246
GX25S	25	62	16.5	16.7	22.5	68	14	58.5	34.5	6	1	5	134	672	0.415
GX30S	30	75	19	19	26	82	17.5	70	42	8	1	5	182	909	0.614
GX35S	35	90	22	20.7	28	98	22	84	50.5	8	1	5	266	1330	0.973
GX40S	40	105	27	21.5	32	114	24.5	97	59	9	1	6	357	1810	1.59
GX45S	45	120	31	25.5	36.5	128	27.5	110	67	11	1	6	486	2470	2.24
GX50S	50	130	33	30.5	42.5	139	30	120	70	10	1	6	554	2810	3.14
GX60S	60	150	37	34	45	160	35	140	84	12.5	1	6	748	3820	4.63
GX70S	70	160	42	36.5	50	176	35	153	94.5	13.5	1	3	902	4610	5.37
GX80S	80	180	43.5	38	50	197	42.5	172	107.5	14.5	1	4	1110	5700	6.91
GX100S	100	210	51	46	59	222	45	198	127	15	1.1	4	1300	6470	10.9
GX120S	120	230	53.5	50	64	250	52.5	220	145	16.5	1.1	3	1530	7580	13.9
GX140S	140	260	61	54	72	274	52.5	243	177	23	1.5	3	1820	9040	18.1
GX160S	160	290	66	58	77	313	65	271	200	23	1.5	2	2100	10440	23.2
GX180S	180	320	74	62	86	340	67.5	299	225	26	1.5	4	2430	12070	30.9
GX200S	200	340	80	66	87	365	70	320	247	27	1.5	1	3070	15280	34.2

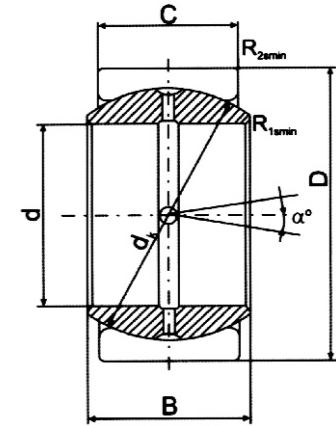
ШСП SERIES





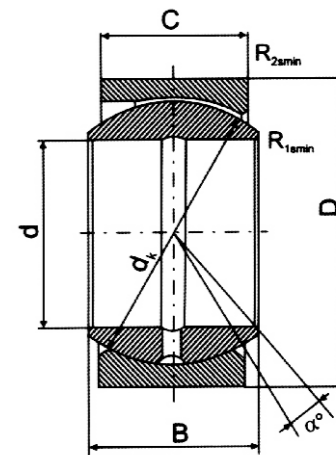
ШСП SERIES

轴承型号 Bearing number	外形尺寸 Dimensions mm								额定载荷kN Load ratings		重量 Weight ≈kg
	d	D	B	C	dk	R1s _{min}	R2s _{min}	α° ≈	动载荷 Dynamic	静载荷 Static	
ШСП8	8	17	8	5	13	0.3	0.3	15	5.5	27.5	0.009
ШСП10	10	20	9	6	16	0.3	0.3	12	8.15	40.5	0.012
ШСП15	15	28	12	8	23	0.3	0.3	8	17	85	0.032
ШСП17	17	32	14	10	26	0.3	0.3	10	21.2	106	0.05
ШСП20	20	35	16	12	29	0.6	0.6	9	30	146	0.064
ШСП25	25	42	20	16	35	0.6	0.6	7	48	240	0.112
ШСП30	30	47	22	18	40	0.6	0.6	6	62	310	0.145
ШСП35	35	55	26	21	47	0.6	0.6	6	80	400	0.235
ШСП40	40	62	28	22	53	0.6	0.6	7	100	500	0.315
ШСП50	50	75	35	28	66	0.6	0.6	6	156	780	0.55



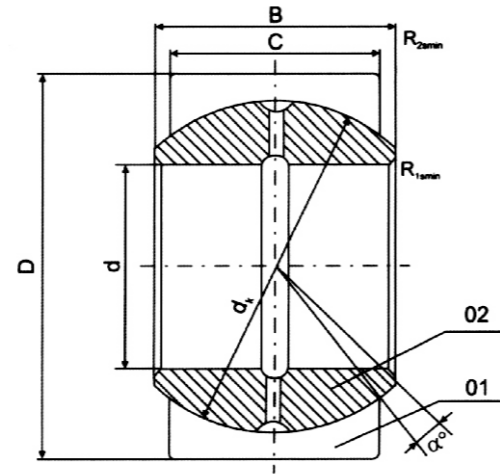
ШСП SERIES

轴承型号 Bearing number	外形尺寸 Dimensions mm								额定载荷kN Load ratings		重量 Weight ≈kg
	d	D	B	C	dk	R1s _{min}	R2s _{min}	α° ≈	动载荷 Dynamic	静载荷 Static	
ШСП60	60	90	44	34	80	1	1	6	245	1220	1.00
ШСП70	70	105	49	40	92	1	1	6	315	1560	1.55
ШСП90k1	90	130	60	50	115	1	1	5	490	2450	2.75



ШС SERIES

轴承型号 Bearing number	外形尺寸 Dimensions mm								额定载荷kN Load ratings		重量 Weight ≈kg
	d	D	B	C	dk	R1s _{min}	R2s _{min}	α° ≈	动载荷 Dynamic	静载荷 Static	
2ШС17	17	40	21	14	31	0.6	0.6	12	30	146	0.12
2ШС20	20	47	26	15	35	0.6	0.6	12	48	240	0.184



ШСΠ SERIES

轴承型号 Bearing number	外形尺寸 Dimensions mm								额定载荷kN Load ratings		重量 Weight ≈kg
	d	D	B	C	dk	R1s _{min}	R2s _{min}	α° ≈	动载荷 Dynamic	静载荷 Static	
6ШСΠ60	60	130	85	70	115	1	1	10	700	3500	5.9
ШСΠ80	80	125	76	70	114	1	1	10	600	3000	3.96

1、符号Symbol

- d: 轴承公称内径或轴颈。 Bearing bore diameter or shank diameter, nominal.
- Δdmp: 单一径向平面内径或轴颈偏差。 Single plane mean bore diameter or shaft diameter deviation.
- vd_p: 单一径向平面内径变动量。 Bore diameter variation in a single radial plane.
- Vdmp: 平均内径变动量。 Mean bore diameter variation.
- ΔBs: 内圈单一宽度偏差。 Deviation of a single width of the inner ring.
- B: 内圈公称宽度。 Width of the inner ring, nominal.
- D: 轴承外围或座圈公称外径。 Bearing outside diameter or housing washer outside diameter, nominal.
- ΔDmp: 单一平面平均外径偏差。 Single plane mean outside diameter deviation.
- VD_p: 单一径向平面外径变动量。 Outside diameter variation in a single radial plane.
- VDmp: 平均外径变动量。 Mean outside diameter variation.
- ΔCs: 外圈单一宽度偏差。 Deviation of a single width of the outer ring.
- C: 外圈公称宽度。 Width of the outer ring, nominal.
- Δhs, Δhis: 杆端关节轴承或球头杆端关节轴承中心高偏差。 Center height deviation of rod ends or ball joint rod ends.

2、向心关节轴承 Spherical plain radial bearings

2.1 GE...E, GE...ES, GE...ES-2RS, GEZ...ES, GEZ...ES-2RS, GEG...ES, GEG...ES-2RS, GE...UK, GE...H0-2RS, GE...UK-2RS

内圈 Inner ring

d 超过 over 到 incl mm	-	10	18	30	50	80	120	150	150	250	315	400
Δdmp μm	0	0	0	0	0	0	0	0	0	0	0	0
vd _p μm	-8	-8	-10	-12	-15	-20	-25	-25	-30	-35	-40	-45
Vdmp μm	8	8	10	12	15	20	25	25	30	35	-	-
ΔBs μm	0	0	0	0	0	0	0	0	0	0	0	0
	-120	-120	-120	-120	-150	-200	-250	-250	-300	-350	-400	-450

外圈 Outer ring

d 超过 over 到 incl mm	10	18	30	50	80	120	150	150	250	315	400	500	630
ΔDmp μm	0	0	0	0	0	0	0	0	0	0	0	0	0
VD _p μm	-8	-9	-11	-13	-15	-18	-25	-30	-35	-40	-45	-50	-75
VDmp μm	10	12	15	17	20	24	33	10	47	53	60	-	-
ΔCs μm	6	7	8	10	11	14	19	23	26	30	34	-	-
	0	0	0	0	0	0	0	0	0	0	0	0	0
	-240	-240	-240	-300	-400	-500	-500	-500	-700	-800	-900	-1000	-1100

开缝型外圈是开裂前的公差。 For split types, the tolerance apply to the outer prior to splitting

2.2 GE...Lo

内圈 Inner ring

d 超过 over 到 incl mm	10	18	30	50	80	120	180	250
Δdmp μm	+18	+21	+25	+30	+35	+40	+46	+52
vd _p μm	0	0	0	0	0	0	0	0
Vdmp μm	18	21	25	30	35	40	46	52
ΔBs μm	14	16	19	22	26	30	35	39
	0	0	0	0	0	0	0	0
	-180	-210	-250	-300	-350	-400	-460	-250

外圈 Outer rings
外圈同GEES型GE...ES
Outer rings are the same as tupe
GEES GE...ES

2.3GEBK...S,GEBJ...S

内圈 Inner ring

d 超过 over 到 incl mm	-	6	10	18	30
Δdmp μm	+12 0	+15 0	+18 0	+21 0	
ΔBs μm	0 -100				

外圈 Outer ring

d 超过 over 到 incl mm	10	18	30	50	60
ΔDmp μm	0 -11	0 -13	0 -16	0 -19	
ΔCs μm	+100 -100				

杆端关节轴承 Rod ends

3.1伸出杆螺纹 Thread of stretching rod.

公制螺纹 Metric thread: 内螺纹 Female 6H 外螺纹 Male 6g.

英制螺纹 Inch thread: 内螺纹 Female UNF-3B 内螺纹 Male UNF-3A

3.2内圈 inner ring

3.2.1 SI...E, SI...ES, SI...ES-2RS, SA...E, SA...ES-2RS, GIR...UK, GIR...UK-2RS, GAR...UK, GAR...UK-2RS, GK...DO, GF...DO, GF...DO, GIHR...DO, GIHR-K...DO, SIQG...ES的 Δdmp, ΔBs同向心关节轴承 GE...E, GE...ES, GE...ES-2RS, GE...UK, GE...UK-2RS, GE...LO.

The Δdmp and ΔBs of SI...E, SI...ES, SI...ES-2RS, SA...E, SA...ES-2RS, GIR...UK, GIR...UK-2RS, GAR...UK, GAR...UK-2RS, GK...DO, GF...DO, GF...DO, GIHR...DO, GIHR-K...DO, SIQG...ES are the same as radial spherical plain bearings GE...E, GE...ES, GE...ES-2RS, GE...UK, GE...UK-2RS, GE...LO.

3.2.2 PHS, POS, SIZP...S, SAZP...S, SIZJ...S, SAZJ...S, Δdmp, ΔBs同向心关节轴承 GEBK...S, GEBJ...S.

The Δdmp and ΔBs of PHS, POS, SIZP...S, SAZP...S, SIZJ...S and SAZJ...S are the same as radial spherical plain bearings GEBK...S, GEBJ...S.

3.2.3 SA...T/K, SI...T/K, SI...BK, SA...BK

d 超过 over 到 incl mm	-	6	10	12	18	30
Δdmp μm	+12 0	+15 0	+18 0	+18 0	+21 0	
ΔBs μm	0 -150	0 -150	0 -150	0 -200	0 -200	

3.3中心高偏差 Center height deviation

d 超过 over 到 incl mm	-	6	20	30	45	60	80
Δhs mm	+0.80 +1.20	+0.80	+1.00	+1.40	+1.80	+2.25	
Δhis mm	+0.65 -1.05	-1.20	-1.70	-2.10	-2.70	-3.40	

3.4其它的尺寸公差选 IT12-IT15. IT12~IT15 are selected for the tolerances of the other dimensions.

球头杆端关节轴承 Ball joint rod ends

球头杆或座 Shank or housing of ball joint

d 超过 over 到 incl mm	-	6	10	18	30
Δdmp μm	0 -30	0 -36	0 -43	0 -52	
Δhis μm	+800 -1200				

球头座圈 Ring of ball joint housing

d 超过 over 到 incl mm	10	18	30	50
ΔDmp μm	0 -27	0 -33	0 -39	
ΔCs μm	+100 -102			

其它的尺寸公差选 TT12-IT15. IT12~15 are selected for the tolerances of the other dimensions.

1配合的公差代号 Tolerance zone number of fit

1.1 与向心、角接触、推力关节轴承的配合 Fitted with radial or angular contact or thrust spherical plain bearing 轴Shaft

轴承类型 Bearing type	工作条件 Operating conditions	滑动摩擦副 Sliding contact surface combination	
		钢对钢 (或青铜) Steel/steel(or bronze)	钢对SF1 (或PTFE) Steel/SF(or PTFE)
向心 Radial	各种荷载 浮动支承 Loads of all kinds, clearance or transiton fit	f8.h6.h7 轴淬火hardened shaft	g6.h6
	各种荷载 固定支承 Loads of all kinds, interference fit	m6.n6	k6

外壳孔 Housing bore

轴承类型 Bearing type	工作条件 Operating conditions	滑动摩擦副 Sliding contact surface combination	
		钢对钢 (或青铜) Steel/steel(or bronze)	钢对SF1 (或PTFE) Steel/SF(or PTFE)
	轻荷载 浮动支承 Light loads ,clearance or transiton fit	H6.H7	H7
	重荷载 固定支承 Heavy loads ,interference fit	J7.M7	K7
	轻合金外壳 Light alloy housings	N7	M7

1.2与杆端关节轴承的配合 Fitted with rod ends

轴Shaft

方向不定负荷 With indeterminate loads	n6.p6
一般条件 Normal conditions	n6.h7

螺纹Thread

外螺纹 Male thread	6g
内螺纹 Female thread	6H

2配合表面粗糙度 Roughness of fitting surface

配合表面 Fitting surface	轴承公称内径 (d) 或公称外径 (D) Bearing bore diameter (d) or outside diameter (D) ,nominal	
	到incl 80 mm	超过 over 到 incl 500 mm
	Ra ≤ μm	
轴颈表面 Shaft surface	1.25	2.00
外壳孔表面 Bore surface of housing	1.60	2.50
轴肩垫圈外壳孔肩的端面 Side of shaft shoulder, washer, housing bore shoulder	2.00	2.50

轴部分以d查表, 外壳部分以D查表。 To took into the table with d for shaft, to look into the table with D for housing.

3配合表面形位公差 Shape and position tolerance of fitting surface.

d或D d or D	超过 over 到 incl mm	-	6	10	18	30	50	80	120	150	180	250	315	400	500
圆柱度 Cylindricity	轴颈 Shaft diameter ≤ μm	4	4	5	6	7	8	10	12	12	14	16	18	-	
	外壳孔 Housing bore ≤ μm	-	4	5	6	7	8	10	12	12	14	16	18	20	
端面圆跳动 Side beat of round circuity	轴肩 Shaft shoulder ≤ μm	8	9	11	13	16	19	22	25	25	29	32	36	-	
	外壳孔肩 Housing bore shoulder ≤ μm	-	9	11	13	16	19	22	25	25	29	32	36	40	
垫圈两端面平行度 Parallelism of two sider of washer ≤ μm		12	15	18	21	25	30	35	40	40	46	52	57	63	

轴部分以d查表, 外壳部分以D查表。 To look into the with d for shaft, to look into the table with D for housing.

1 向心关节轴承 Spherical plain radial bearings

1.1 非自润滑型 Type non-maintenance-free

1.1.1 E,HO,LO 系列 Series E,HO,LO

d	超过 到	over incl	mm	- 12	12 20	20 35	35 60	60 90	90 140	140 160	160 240	240 315
C2组 Group C2	min max		μm	8 32	10 40	12 50	15 60	18 72	18 85	18 100	18 100	18 110
基本组 Group normal	min max		μm	32 68	40 82	50 100	60 120	72 142	85 165	100 192	100 192	110 214
C3组 Group C3	min max		μm	68 104	82 124	100 150	120 180	142 212	165 245	192 284	192 284	214 318

1.1.2G 系列 SeriesG

d	超过 到	over incl	mm	- 10	10 17	17 30	30 50	50 80	80 120	120 160	160 220	220 280
C2组 Group C2	min max		μm	8 32	10 40	12 50	15 60	18 72	18 85	18 100	18 100	18 110
基本组 Group normal	min max		μm	32 68	40 82	50 100	60 120	72 142	85 165	100 192	100 192	110 214
C3组 Group C3	min max		μm	68 104	82 124	100 150	120 180	142 212	165 245	192 284	192 284	214 318

1.1.3 Z 系列 SeriesZ

d	超过 到	over incl	mm	- 15.875	15.875 50.8	50.8 76.2	76.2 152.4
基本组 Group normal	min max		μm	50 150	80 180	100 200	130 230

1.1.4 Z GEBK...S GEBK...S

d	超过 到	over incl	mm	- 30
基本组 Group normal	min max		μm	0 35

1.2 自润滑型 Type maintenance-free

1.2.1 GE...C GE...FW

d	超过 到	over incl	mm	- 12	12 20	20 32
基本组 Group normal	min max		μm	4 28	5 35	6 44

1.1.2 GE...FW-2RS

d	超过 到	over incl	mm	- 30	30 50	50 80	80 120
基本组 Group normal	min max		μm	0 50	0 60	0 72	0 85

1.2.3 GE...UK-2RS

d	超过 到	over incl	mm	- 20	20 35	35 60	60 90	90 120	120 220	220 280
基本组 Group normal	min max		μm	0 40	0 50	0 60	0 72	0 85	0 100	0 110

2 杆端关节轴承 Rod ends

2.1 非自润滑型 Type non-maintenance-free

2.1.1 E,HO,LO 系列 Series E,HO,LO

d	超过 到	over incl	mm	- 12	12 20	20 35	35 60	60 80
基本组 Group normal	min max		μm	0 68	0 82	0 100	0 120	0 142

适用于SI...E,SI...ES-2RS,SA...E,SA...ES,SA...ES-2RS,GIHR...DO,SIQG...ES,GK...DO,GF...DO等型

Available for the type of SI...E,SI...ES-2RS,SA...E,SA...ES,SA...ES-2RS,GIHR...DO,SIQG...ES,GK...DO,GF...DOect

2.1.2 P,ZP系列 Series,ZP

d	超过 到	over incl	mm	- 30
基本组 Group normal	min max		μm	0 35

2.1.3 ZJ系列 Series ZJ

d	超过 到	over incl	mm	- 8	8 14	14 20	20 35	35 80
基本组 Group normal	min max		μm	10 30	15 60	40 80	50 90	60 110

3 球头杆端关节轴承 Ball joint rod ends

2.1.3 ZJ系列 Series ZJ

d	超过 到	over incl	mm	- 12	12 20	20 30
基本组 Group normal	min max		μm	0 32	0 40	0 50

d	超过 到	over incl	mm	- 12	12 20	20 35	35 60	60 80
基本组 Group normal	min max		μm	0 32	0 40	0 50	0 60	0 72

3 球头杆端关节轴承 Ball joint rod ends

类型 Type	单杆型 One shank	弯杆型 Winding shape	直杆型 Straight shape
基本组 Group normal	min max	μm	20 30
			20 60
			- 30